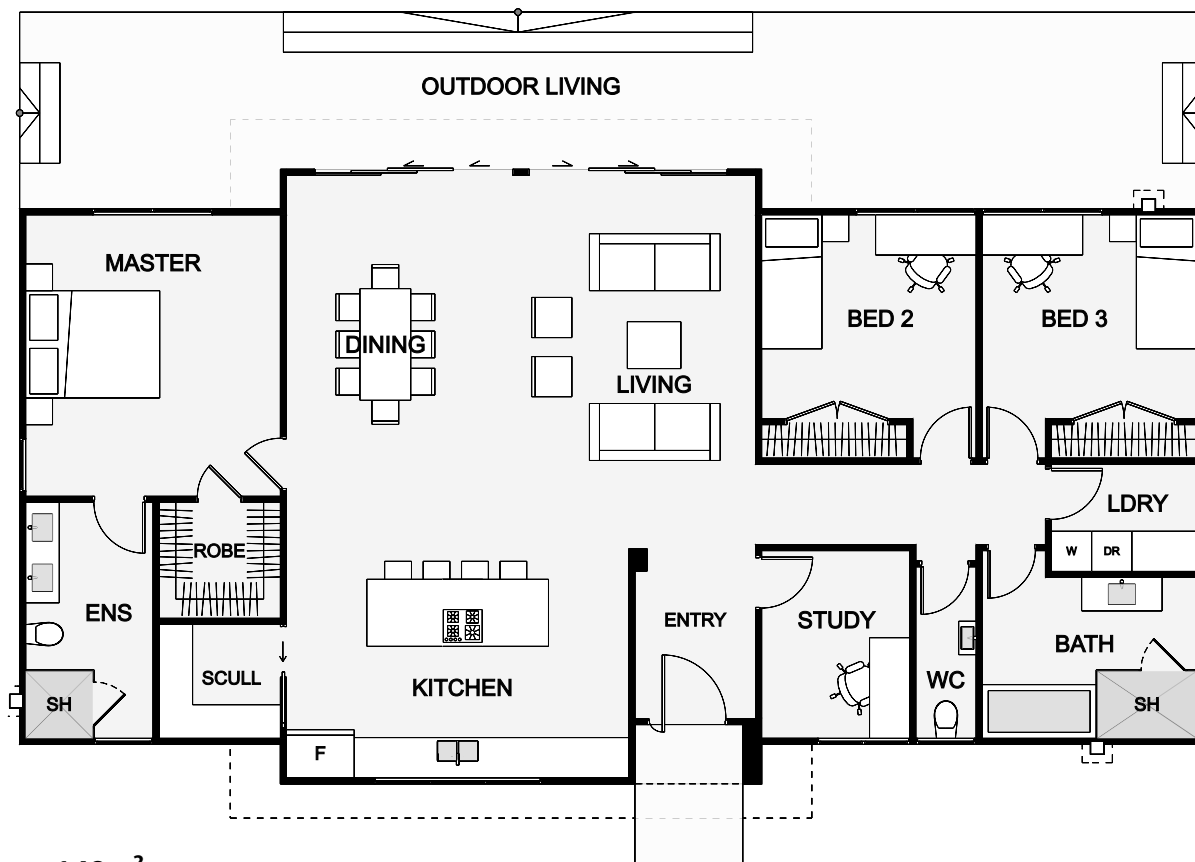




You will be intrigued by this cleverly planned and well executed compact home. Complete with two generous sized bedrooms at one end of the home and at the opposite, a spacious master bedroom with ensuite and a large walk-in-robe. There is a home office/study ideally located next to the front entrance, making the Taramea an excellent choice for those who work from home. The kitchen, family and dining open out onto the courtyard through the extra high glazing, providing the perfect space for everyone to relax, entertain and enjoy, making this home easy to love.



Floor Area: 148m<sup>2</sup>

0 cars, 3 bedrooms, 2 bathrooms, 1 living area, 17.7m wide, 9.2m deep

© Barry Stewart Builders Ltd

Contact us:

Ph: 03 215 4622

Email: [neil@barrystewart.co.nz](mailto:neil@barrystewart.co.nz)

[www.barrystewart.co.nz](http://www.barrystewart.co.nz)



**BARRY  
STEWART  
HOMES**