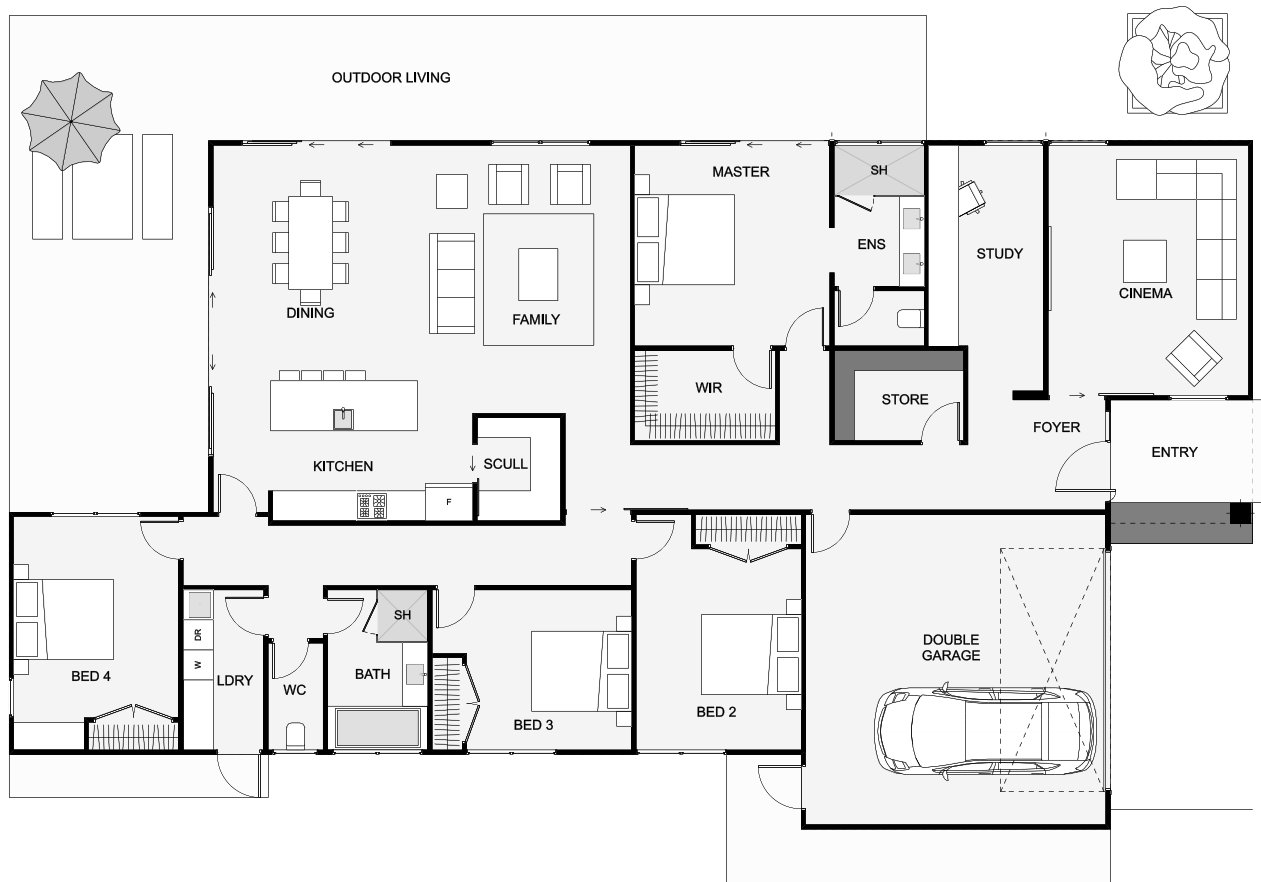




Get some modern street appeal with architectural twin gables and dark weatherboard cladding. This home has two living spaces, each at opposite ends of the house, always handy! A large study, close to the entry, is great if you work from home. Also included is a large laundry, scullery and a living space which flows out to the outdoor living. This home really does work as good as it looks!



Floor Area: 265m²

 2
  4+
  2
  2
  24.9m
  13.8m

© Barry Stewart Builders Ltd

Contact us:

Ph: 03 215 4622

Email: neil@barrystewart.co.nz

 www.barrystewart.co.nz



**BARRY
STEWART
HOMES**